

PERFORMANCE

Processor

Intel® Core™ i3-12100, 4C (4P + 0E) / 8T, P-core 3.3 / 4.3GHz, 12MB

Graphics

Integrated Intel UHD Graphics 730

Chipset

Intel B660

Memory

1x 8GB UDIMM DDR4-3200

Memory Slots

Two DDR4 UDIMM slots, dual-channel capable

Max Memory

Up to 32GB DDR4-3200

Storage

512GB SSD M.2 2280 PCIe® 3.0x4 NVMe®

Optane™ Memory

None

Storage Support

Up to two drives, 1x 3.5" HDD + 1x M.2 SSD

- 3.5" HDD up to 2TB
- M.2 SSD up to 1TB

Card Reader

7-in-1 Card Reader

Optical

None

Audio Chip

High Definition (HD) Audio, Realtek® ALC623-CG codec

Power Supply

180W 85%

DESIGN

Keyboard

USB Calliope Keyboard, Black, Italian

Mouse

USB Calliope Mouse, Black

Expansion Slots

Two M.2 slots (one for WLAN, one for SSD)

Case Color

Cloud Grey

System Fan

None

Form Factor

SFF (7.4L)

Dimensions (WxDxH)

100 x 303.5 x 274.8 mm (3.9 x 11.94 x 10.8 inches)

Weight

6.25 kg (13.8 lbs)

CONNECTIVITY

Ethernet

Integrated 100/1000M

WLAN + Bluetooth®

11ax, 2x2 + BT5.1

Front Ports

- 2x USB 3.2 Gen 1
- 1x USB-C® 3.2 Gen 1 (support data transfer and 5V@3A charging)
- 1x headphone / microphone combo jack (3.5mm)
- 1x microphone (3.5mm)

Optional Front Ports (configured)

1x card reader

Rear Ports

- 2x USB 2.0
- 2x USB 3.2 Gen 1
- 1x VGA
- 1x HDMI® 1.4
- 1x Ethernet (RJ-45)
- 1x power connector

SECURITY & PRIVACY

Security Chip

Firmware TPM 2.0 integrated in chipset

SERVICE

Base Warranty

2-year, Courier or Carry-in

Included Upgrade

None

CERTIFICATIONS

Green Certifications

- ErP Lot 3
- RoHS compliant

SOFTWARE

Operating System

Windows® 11 Home 64, Italian / English

Bundled Software

None

MODEL

TopSeller

: No

Announce Date

: 2022-07-27

EAN / UPC / JAN

: 196802584685

End of Support

: 2028-01-15



intel

Premium Care - Advanced Support from Real People. Real Fast.



REAL PERSON

Choose how you want to reach us - through the phone, chat or email - our expert technicians will take care of you.



REAL FAST

Highly trained technicians will provide you real-time solutions, whatever the issue, on your first contact. If needed, our team will schedule an onsite visit for the next business day.



HASSLE FREE

'Getting started' and 'how-to' assistance for hardware and software. Easy solutions that are simple to reach - that's how Premium Care delivers you the ideal support experience.



PC HEALTH CHECK

Free annual PC Health Check that allows our experts to spot issues before you do so they can resolve them quickly and help you avoid PC problems.

Accidental Damage Protection - Protection of your PC from the unexpected.

Experience shows that a significant portion of devices may be damaged (and not covered under warranty) in the first three years. Lenovo's Accidental Damage Protection service covers accidents beyond the system warranty such as drops, spills, bumps and even electrical surges. Make sure your new device has maximum protection, avoid unplanned costs and get peace of mind.

Base Warranty – Included with the systems you purchase, default 1- or 3-year coverage window.

Warranty Extensions & Upgrades – Service and protection that's right for your circumstances.

- Pick Up & Return Courier
- Onsite Support
- Technician Installed Customer
- Replaceable Unit Service
- International Warranty Upgrade

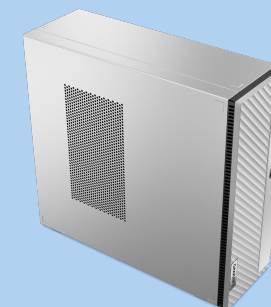
Lenovo may not offer the products, services or features discussed in this document in all regions. Lenovo may withdraw an offering at any time. Consult your local representative for information on offerings available in your area. Lenovo reserves the right to change specifications or other product information without notice. Lenovo is not responsible for photographic or typographical errors. Lenovo provides this publication "as is" without warranty of any kind, either express or implied, including the implied warranties of merchantability or fitness for a particular purpose.



intel



intel



intel

Lenovo

PSREF
Product Specifications
Reference